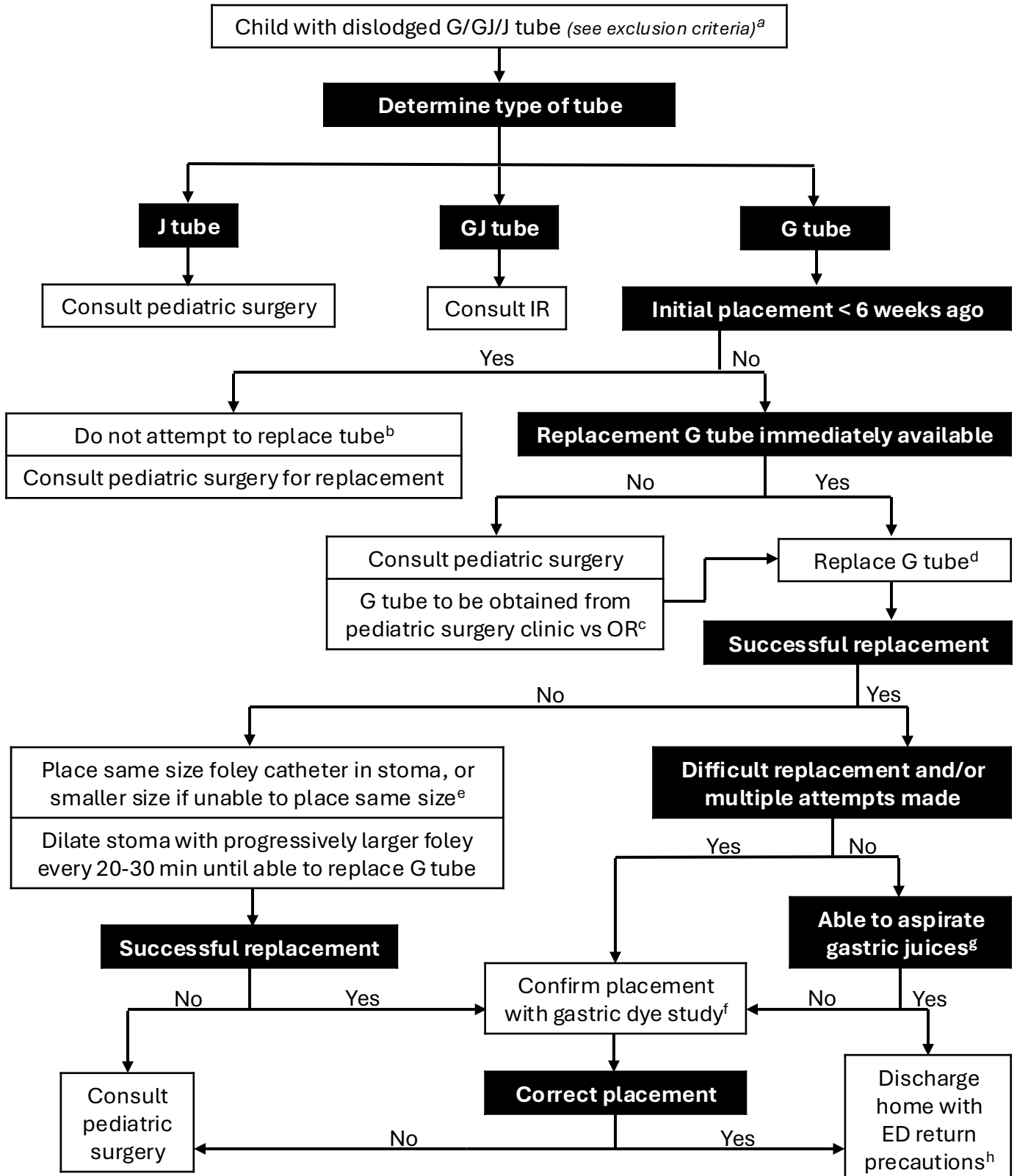




University of Missouri Pediatric Service Line

Pediatric Emergency • Clinical Practice Guidelines

Gastrostomy (G)/Gastrojejunostomy (GJ)/Jejunostomy (J) Tube Dislodgement Guideline





University of Missouri Pediatric Service Line

Pediatric Emergency • Clinical Practice Guidelines

Footnotes:

- a. Exclusion criteria: adults >18 years of age, NG tubes
- b. G tubes inadvertently removed within 4-6 weeks of placement should NOT be replaced blindly at bedside due to immaturity of G tube tract and risk of placement into the peritoneal cavity instead of the stomach.¹
- c. If replacement G tube is unavailable, place same size foley catheter, inflate balloon and discharge home with pediatric surgery clinic follow up the following day.
- d. G tube replacement procedure: Pass the tip of the catheter into the opening to the gastrostomy site and, with steady, firm pressure, push it down in the direction of the stomach, perpendicular to the abdominal wall. It may take 30-45 seconds of steady pressure to stretch the site enough to permit entry. When the gastric lumen is entered, resistance should suddenly lessen.¹
- e. G tube tracts will begin closing within 24 hours, and in some cases as quickly as 4-8 hours of dislodgement. Do not delay foley placement if replacement G tube is not immediately available. Foley catheter should be inserted gently using lubricant and secured by taping to the abdomen^{1,3}
- f. Gastric dye study is indicated following the first replacement of a G tube or in cases of difficulty replacing a G tube, concern for significant trauma to the tract, and/or if unable to aspirate gastric contents.³ Order as “XR abdomen; Stat,” with “Comments: gastric dye study to confirm G tube placement.”
- g. Gastric contents/juices should have pH < 4.²
- h. ED return precautions: recurrent dislodgement of tube, worsening abdominal distension, severe abdominal pain, persistent vomiting

References:

1. DeLegge MH, et al. “Gastrostomy tubes: Complications and their management.” UpToDate, 2024.
2. Shaw KN, et al. “Fleisher & Ludwig’s Textbook of Pediatric Emergency Medicine, 7th Edition.” Lippincott Williams & Wilkins, 2016.
3. Children’s Hospital of Philadelphia “ED pathway for care of the child with GJ or G tube displacement,” 2024.